



ADXA Minutes



The fourth quarter meeting of the ADXA was held Smoking in Style in Hot Springs, AR on December 14, 2013. A partial list of those in attendance: Glenn Wolf, N5RN, Pat Patterson, W5VY, Dave Jacques, K5DV, Rick Roderick, K5UR, Earl Smith, N5ZM, Paul Wolf, AA5PW, Ollie Gade, W5GO, Frank Fahlander, N7FF, Roger Gray, N5QS, Dawn Gray, N5QT, Jim Ferguson, N5LKE, and Jim Barron, WB5AAA. Guest included Sunnye Davis, Sharon Smith, and Holly Roderick.

The meeting was called to order by President Frank Fahlander, N7FF at 12:50 PM. Introductions were done by going around the room and letting those in attendance introduce themselves.

K5DV motioned that the minutes as presented in the newsletter be accepted. N5ZM seconded and the motion carried.

N5RN gave treasurer's report. WB5AAA, motioned that it be accepted, K5DV seconded. The motion carried.

Health and Welfare

Madge Kollatt reports that Frank is having problems getting enough iron. Jean Gade is having issue with her gall bladder. Mention of the celebration of life for Bill Harper, K9IW.

Old Business

WB5AAA nominated Frank, W5BPT for consideration as an honorary member. The motion carried.

New Business

K5UR talked about DXAC issues and issue related to remote sta-

(Continued on page 6)

Upcoming Dates

The next meeting for ADXA is:

March 15 2013 — Home of N5ZM near Samples, AR.

All meetings begin at

1:00 but food and drinks are served beginning around 12:00.

If you have cards that you would like to have checked, please contact Earl at n5zm at adxa

dot org. You should plan on arriving early around 11:00 to give Earl enough time to check cards and then grab a bite to eat.

Inside this issue:

Words of Wisdom	2
Martinique—2013, AI5P	3
Directions to next Club Meeting	7

Special points of interest:

- Club Meeting March 15, 2014—Home of N5ZM

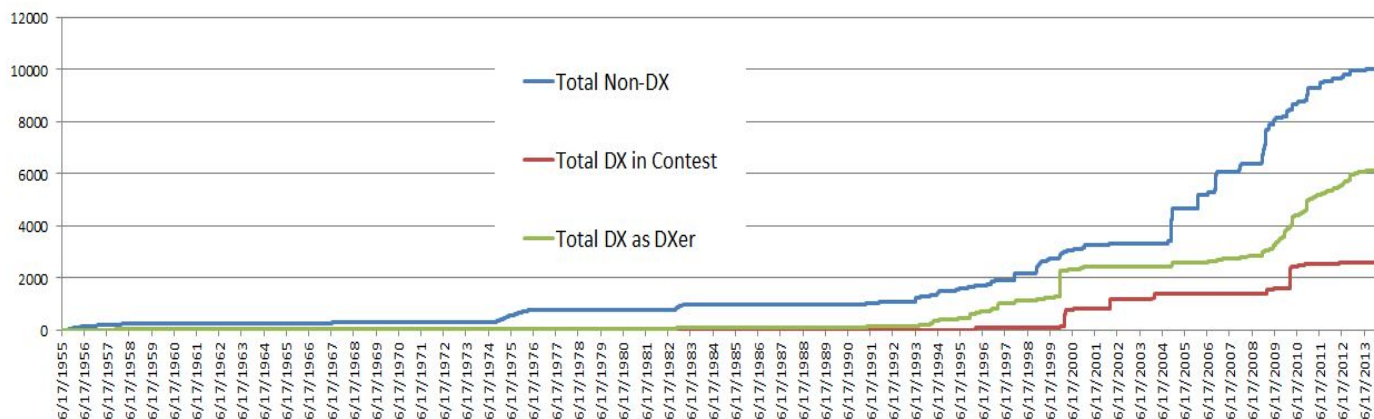
Words of Wisdom From the President

Frank Fahrlander—N7FF

I have Contesting and Elmering on my mind these days and I've been thinking of how both can be helpful to the hobby and the prospective DXer.

Both parts of the 2014 ARRL DX Contest are over now and I have an additional 600+ DX QSO's in my log-book. It had been a while since I had operated in a contest and it felt good to be able to do it again. It reminded me of my first DX contest and the "I can do this!" feeling it gave me. The ARRL DX Contest is especially exciting in this regard. During this 48 hour period, DX are just trying to work us in the North America and we are just trying to work them. How sweet is this for a DXer? For Arkansans, it is even sweeter because we are a somewhat tough multiplier to get for DX stations. Every time I play in this contest I get a number of "Thank you for Arkansas!" responses and even requests to move to another band and work them right now. If I do manage to pull that off, the gratitude is really poured on.

As I think back over my ham activity I have always felt that it was the DX contests that changed my whole perspective towards DX. I believe they gave me confidence that my "little pistol" station of 100 watts and a wire antenna could work DX and a lot of it. I took a detailed look at my log to see just how much of an influence contests have had. The chart below shows how each of three types of QSO's has grown in my log. The largest growth is in Non-DX which I defined here as US and Canada. The red curve shows DX QSO's in the log that have happened as a result of my operating in a DX contest. As you can see, these usually have steps where the QSO's occurred in a very short period. To me, the most interesting curve is the green one. This shows DX QSO's accumulating in my log that was the result of being a DXer. You can also see that the curve really started to grow after some DX QSO had been entered via contests. So it is pretty clear that DX contests nurtured me into being a DXer.



While contests were confidence building, Elmers like Bill, K9IW, and the other members of ADXA were the ones that nurtured the real DXer in me. I became a member of ADXA in December 2007 and my journey toward DXCC and real DXing began in earnest.

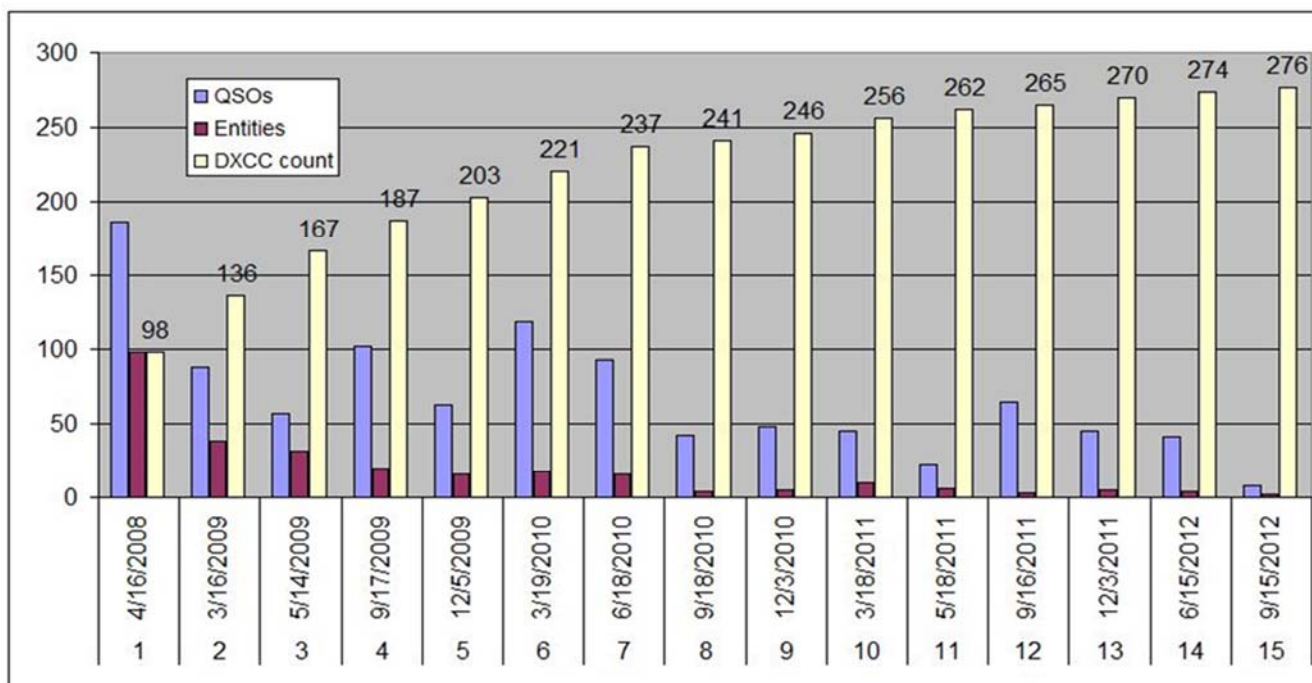
(Continued on page 3)

Words of Wisdom From the President

Frank Fahrlander—N7FF

(Continued from page 2)

I had a lot to learn. Getting DX confirmations wasn't one of my strengths. I learned that I had to keep much better accounting of my DX if I were to make any significant progress. Seeing Earl's use of DXbase sold me. For a year I used that extensively and then moved to DXsuite. I had to learn how to get cards checked and how to submit a DXCC application. Earl support to us in card checking is wonderful. I always was challenged to do what he wanted perfectly but I rarely succeeded. After gathering my first 100 cards I made a submission with Earl's help. That was quite a milestone for me. About a year later I started making regular DX application submissions as the chart below shows. I was a DXer!



I show all this not to toot my own horn but to praise the influence that ADXA and its Elmering influence can have. I thank you for that.

Good Contesting, Good Elmering and Good DX!

Frank, N7FF

Martinique —2013

AI5P—Rick Harris

Martinique 2013

I took the modern L'Express ferry from Dominica to Martinique on April 20th.. My host, Laurent Bellay, FM5BH, met me dockside. I had stayed with him and used his outstanding contest station during my first trip to Martinique in 2011.

The weather during my two weeks here ran from rainy to very overcast to sunny. Mostly overcast with some rain during the night. I did some sightseeing to include several sites I visited in 2011. New sites included the Habitation Clement, a historic Plantation Home and distillery of the famous Clement Rum; beautiful churches in Les Anses-D'Arlet and Le Morne-Rouge, to "road's end" towards Mount Pelee (highest point on the island and the volcano that erupted in 1902), and the Rhum JM distillery. Previous sites again visited were the capital, Fort-de-France with it's central market, St-Louis Cathedral, and Schoelcher Library; St. James distillery and rum museum, Balata Church (a smaller replica of the famous Sacre-Coeur church in Paris), Rocher du Diamant (HMS Diamond Rock), and the magnificent Balata Gardens, home of over 3,000 varieties of tropical plants from around the world. Lots of photo opportunities! I again explored St. Pierre - destroyed in the 1902 volcanic eruption and now a thriving village on the northwestern coast.

I spent more time chasing DX this trip than just working stations. I wanted to finish up DXCC from here. Laurent had applied for the special license TO5PX for me from Paris and it had arrived just in time.

His station consists of a Yaesu FT-1000MP Mark V transceiver and a

OM2500 amp. The antennas were something to see:

160m - 1/4 wave Inverted L

80m - Inverted V at 18 meters

40m - Cushcraft XM-240 2 elements at 18 meters

30m - Inverted V at 10 meters

20/15/10m - Force 12 C31XR 14 element beam (7 elements on 10, 4 on 15 and 3 on 20) at 15 meters

A spider beam at 15 meters carried 14 elements on 5 bands 10-20 meters. I didn't operate on 160 but did manage contacts on all the other bands.

Contacts:

80m - 85

40m - 708

30m - 528

20m - 660

17m - 1522

15m - 324

12m - 779

10m - 172

Totals: 4778 (2078 on SSB - 43%; 2700 on CW - 57%)

17 meters was the major effort with 32% of the contacts.

A total of 155 mixed entities were worked - with 121 SSB entities and 117 on CW.

Interesting stations worked included: E51JD, TZ6BB, A45XR, D3AA, SU9AF, MU0GSY, EL2RL, ZD7FT, EA9IB, 5N7M, TC57A, IM0MA,

G100RSGB, 9Q6AL, OX3XR, HZ1TT, V51WW, 9K2UU, HS0ZIV, FP5BZ, PA2013KING, FO8WBB, 5H1DX, 9H5DX, YE6YE, 6V7T, TF3JB, ZK3N, VP8LP, J49C, GJ100C, T77BL, 5U9A-MO, SV5BYR/5, 8Q7KP, OY9R, 5T0JL, 7X5KBS, A61Q, OH0BHU, LZ833MBB, R11FJ, 5B75FOC, A35UD, 9M2TO, FO/KH0PR, R11ANU (South Shetlands), A71GO, Z320T, V6H, A92GE, MD0CCE, ZB2FK, SU8N, TR8CA, IH9YMC, 7Z1CQ, VU3DMP and VU2MTT.

With this station, I was normally able to work anyone I called in only one or two calls! I can only recall two stations I did not manage to work that I could hear - a 4S7 and a JY - and the JY station signed off before I could retune the amp!

The QSL features a photo of the village of Saint Pierre with Mount Pelee in the background. By 1900 Saint Pierre was the most important city in Martinique culturally and economically, being known as the "Paris of the Caribbean." However, on May 8, 1902, the city was destroyed by the volcanic eruption of Mount Pelee (4,583 feet), four miles north of the city. The upper mountainside ripped open and a dense black cloud shot out horizontally. A second black cloud rolled upwards, forming a gigantic mushroom cloud darkening the sky for 50 miles. The initial speed of the clouds was later calculated to be over 420 miles per hour. Legend has reported that out of 30,000 in the city, only two survived. Mount Pelee, which last erupted in 1932, is still one of the most active volcanoes in the West Indies and is likely to erupt again.

(Continued on page 5)



Martinique —2013

AI5P—Rick Harris (Continued)

(Continued from page 4)

On May 4th, TO5PX went QRT and I flew home via Miami and DFW.

Unfortunately, going through customs in Miami was a long (3 hour) and exasperating experience! But I was safely home on May 5th after a most interesting trip to Dominica and Martinique.



Above—TO5PX Operating position



Left— FM5BH QTH and antenna systems



Left— Balasta Gardens



Above— Saint Pierre and Mount Pelee

(Continued from page 1)

tions. It was suggested that we encourage K5UZ to keep the discussions going on these issues. It was proposed that ADXA draft a letter stating our stance on these issues. K5UR will help with the drafting of this letter.

Discussion about the ARRL Second Century campaign. After some discussion a motion was made by K5DV and seconded by W5VY to support the campaign. The motion carried.

No update on Navassa. Discussion about band rate for digital. Seems there is a lot of discussion related to

this issue.

It was asked if anyone has heard about CQ magazine being in financial difficulties. No one knew anything.

A motion by N5ZM and a second by K5DV to support the Mellish Reef

Locations for future meetings

March 2014—N5ZM

June 2014—Pat Patterson to take care of. Tentatively in Little Rock

September 2014—Spillway. K5GO will take care of.

A15P Awards for Central America

Mixed—N5ZM—12 points

CW—K5UR—11 points

SSB—W5GO—10 points

Closing remarks

K5DV moved to adjourn, WB5AAA seconded, motion passed. Meeting adjourned at 1:42 PM.

Dues are Due

As a reminder, your 2014 ADXA dues are due. I will be collecting them at the meeting.

Yearly Individual Dues: \$25.00

Family membership: \$35.00

Dues can also be accept-



ed via PayPal:

Using your PayPal account send your dues

payment to:

n5rn@adx.org

Make sure you select the personal tab and identify this payment as a gift or there will be a surcharge.



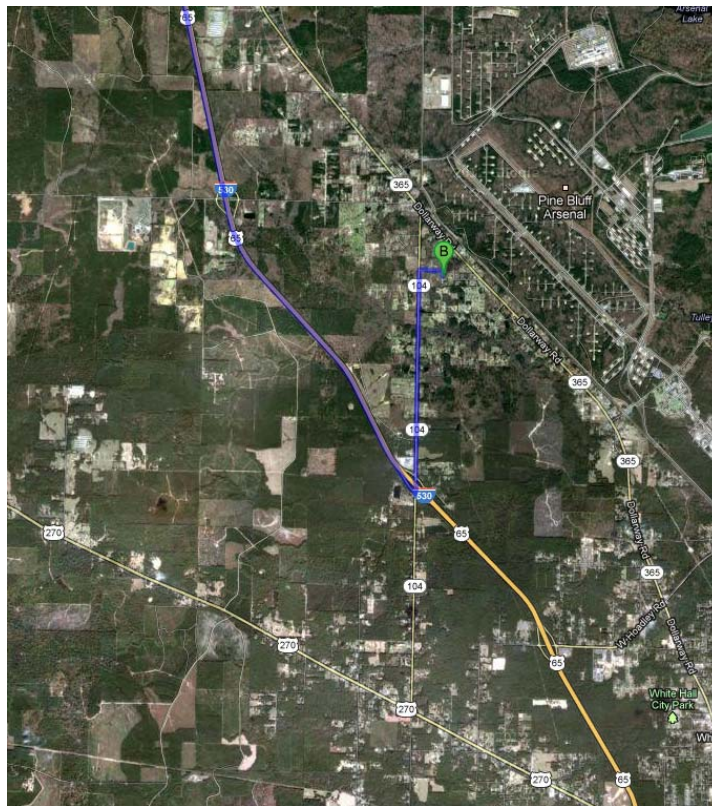
Directions To Next ADXA Club Meeting—March 15, 2014

N5ZM's QTH

4323 Oakhaven Dr,
White Hall, AR 71602

GPS Coordinates

34° 20.17404' N 92° 08.15136 W
34.336234 N 92.135856



Directions

From Little Rock—take I530 South to Exit 30, turn left on AR 104, travel to Wagon Trace (on your right), make a right on Wagon Trace, travel until you reach Oakhaven. Destination is at intersection of Wagon Trace and Oakhaven.

From Hot Springs—take US270 to the AR 104 exit, make a left onto US 104, cross under 530 continue to Wagon Trace (on your right), make a right on Wagon Trace, travel until you reach Oakhaven. Destination is at intersection of Wagon Trace and Oakhaven.



Organization

ARKANSAS DX ASSOCIATION

MEMBERSHIP/RENEWAL APPLICATION

BUSINESS NAME

President: Frank Fahrlander, N7FF
Vice President: Jim Barron, WB5AAA
Secretary/Treasurer: Glenn Wolf, N5RN

Club Mailing Address:
E Glenn Wolf Jr
210 S Estates Cove
White Hall, AR 71602



We're on the web
www.adxa.org

CALL: _____

LICENSE CLASS: _____

APPLICATION: NEW RENEWAL

NAME: _____

PHONE: () _____.

ADDRESS: _____

CITY: _____

STATE: _____

ZIP: _____

EMAIL: _____

DXCC MEMBER? _____

ARRL MEMBERSHIP EXPIRES: _____

SPONSOR'S CALL _____

ARRL MEMBERSHIP REQUIRED

(ADXA IS A 100% ARRL AFFILIATED CLUB)

VOTING MEMBERS MUST HOLD DXCC

VALID INTEREST IN DX REQUIRED FOR ASSOCIATE (NON-VOTING) MEMBERSHIP

YEARLY DUES **\$25.00**, Family membership **\$35.00**

Dues can also be accepted via PayPal:

**Using your PayPal account send your dues payment to
n5rn@adxa.org**

**Make sure you select the personal tab and identify this payment as a gift
or there will be a surcharge.**

MAIL APPLICATION TO:

E Glenn Wolf, Jr., N5RN
210 S Estates CV
White Hall, AR 71602 -8216