



ADXA Minutes



The 2nd quarter meeting of the ADXA was held at Corkies BBQ in Little Rock. Those that signed the sign in sheet include Glenn Wolf, N5RN, Pat Patterson, W5VY, Frank Fahrlander, N7FF, Rick Roderick, K5UR, Bruce Plantz, K9OZ, Ken Blevins, K5ALQ, James Ferguson, N5LKE, Roger Gray, N5QS, Dawn Gray, N5QT, Earl Smith, N5ZM. Guests included Scott Wolf, KG5CCU, Robert Love, KE5FNA, Rodney Rex, KC5PAR, Landon McCord, AF5OD, Hollye Roderick and Sharon Smith. The meeting was called to order at 1:01 by President N7FF. Each person was asked to intro-

duce themselves to the group.

Health and Welfare

W5BPT seems to be doing well. Was seen at HamCom. W5GO was not at this meeting which is rare. WB5AAA was at HamCom but is moving.

Old Business

A motion was made to dispense with the reading of the minutes by N5QS. Seconded by N5ZM. Motion carried.

N5RN gave the Treasurers report. N5ZM motioned that it be accepted. N5QS seconded. Motion carried.

K5UR gave an update on

the activities at the ARRL.

- DXAC—Not much happening.
- Centennial is next month in CT. 27 countries will be in attendance.
- LOTW—2 programmers hired. LOTW is approaching a billion QSOs.

N5ZM commented that the DXCC filing fee is up \$1 for hand checking (120 cards). \$0.15 for each above 120. One-line submitting is easy and preferred.

N5ZM reminded the group that both N5QS and

(Continued on page 8)

Upcoming Dates

The next meeting for ADXA is:

September 20 2014 — Spillway Pavilion.

All meetings begin at 1:00 but food and drinks

are served beginning around 12:00.

If you have cards that you would like to have checked, please contact Earl at n5zm at adxa dot org. You should

plan on arriving early around 11:00 to give Earl enough time to check cards and then grab a bite to eat.

Inside this issue:

Words of Wisdom	2
Card Checking Tips	3
Articles from out members	4
El Salvador—AI5P	6
New and Noteworthy	8
Directions to next Meeting	9

Special points of interest:

- Club Meeting September 20 2014— Spillway Pavilion 1:00PM

Words of Wisdom From the President Frank Fahrlander—N7FF

Hi all,

I managed to work a few DX stations since the last time I tried to be “wise” here but I bet many of you have probably been hunting for new ones more assertively than I. One of the great things about this aspect of our hobby is that your involvement can vary as you see fit. I suppose, however, that our DXing muscles may get a bit sluggish with inactivity, however. Certainly, you can miss opportunities too. I hope you guys have taken the opportunity to work the rare ones and also J3/AI5P and 9Y4/AI5P this summer. Thanks for the opportunities Rick.

A big one is coming up. That is FT4TA, Tromelin 2014. Their August 26th web site update indicates they are in pretty good shape for the trip which is now just under 60 days away. They have listed our club’s logo on their web page and you may have seen the note I got from Flo, F5CWU, thanking us for our donation. I wish these folks well.

In reading about Tromelin, I see that Philately is a big business for them. They have issued more than 600 stamps since 1995. I dabbled in stamp collecting when I was a boy and I was amazed at all the colorful stamps from this far off place called San Mareno! Any of you folks remember those? I found out that San Marino started issuing stamps in 1877. I don’t collect stamps now but those who do may be interested in the new stamp that Tromelin is planning to issue to commemorate this 2014 DXpedition.

Back in January, as a result of a club discussion and a vote at that meeting I sent a prepared statement to the DXAC recommending a limitation on the use of “remote stations” as it applies to DXCC. I sent that correspondence and the reply to our reflector so all could see. As a result, I did receive a contrary view by a members.

On August 14, I received a copy of the DXAC July 06 Task Final Report. This report discussed our inputs (broadly) but decided that no rules change was needed. I sent this document and a note from Dave to the club reflector and encouraged members to discuss it by posting comments and suggestions. I think we did have a few good comments posted and I also received an insightful email directly. I am not sure the club really wants to do anything further with this issue. I can personally accept the decision to not add any constraints on remote operation. If, however, the club still finds that there is a need to make a firmer statement, based on a club consensus, I’ll be glad to deliver the message. Please let me know.

See you at the meeting. 73,

Card Checking Tips

Earl—N5ZM

DXCC Card Checking will be available at the meeting. To avoid problems with field checking your application be sure to follow the instructions on the ARRL website. Note that as of April 2, 2012, there are 2 ways of doing a paper card submission, online and traditional. You can no longer do a hybrid LoTW and paper card submission on a single application. It is absolutely necessary that you follow all the instructions and have all the paperwork properly filled out or I will not be able to check your cards.

If you use the preferred Online Electronic DXCC Application <<https://p1k.arrl.org/onlineDXCC/>> for your paper cards it will be easier and cheaper for you. It will also go a lot faster at HQ when they get your paperwork since you already entered your card data in the ARRL system. With the online application you can enter the cards in any order. Just make sure to enter the QSOs on cards with multiple QSOs together to facilitate checking. The reason you don't have to sort by band then mode is because there is minimal data entry work at HQ when they get your field checked application.

You can also use the Traditional Application forms <<http://www.arrl.org/dxcc-forms>> where you fill in and print the PDF forms for the application and record sheets. Make sure to follow those instructions. A traditional application will cost you roughly twice as much as the online application to cover data entry costs at HQ. With a traditional application you must sort cards by band then by mode with all the multiple QSO cards being listed last to facilitate data entry at ARRL HQ. If you use the traditional application make sure you include valid credit card info on the bottom of the PDF application form.

Whichever way you do it, follow those instructions and make sure the cards are properly sorted in the same order as your DXCC Record Sheet. Also make certain that all the QSL card information (call, date, band, mode, country) has been entered correctly on the record sheet.

Bring the following:

- Cards sorted per your Record Sheet
- Printed copy of the signed and dated Application Sheet
- Printed copy of the DXCC Record Sheet
- Stamped envelope addressed to DXCC Desk, ARRL HQ, 225 Main Street, Newington, CT 06111, so I can mail your application to HQ.

Thanks, Earl N5ZM

Articles from Our Members

Dennis Schaefer—W5RZ

I had an interesting experience before the DX banquet at Dayton. As a kid and new General in the 60's, I worked some DX, but one afternoon, I heard Don Miller, W9WNV, as 5W1AD burning things up on 20 meter CW. He was working split, and he was good! I think it became crystal clear at that moment that DXing was what I wanted to do. I wasn't able to bust the pileup for him on CW, but did work 5W1AD on SSB. Then a few days later, Don was at YJ8WW and I got him on CW. Even though I had low power and simple antennas, I worked Don from several other locations, and also chased Gus Browning and the Colvins. I've been involved in many ham activities, but DXing is always the first love.

Later, Don was in a conflict with the ARRL over some irregularities. There was evidence that he wasn't where he said he was on some operations. Later, he got into legal trouble of a more serious nature. By that time, I was in college and didn't pay that much attention.

My friend Pat, W5VY, was nice enough to invite me to attend the DX banquet at Dayton with him this year. At the mixer before the DX banquet, I saw a gentleman I didn't recognize. I looked at his name tag - W9WNV. I couldn't help but introduce myself to him. He was very polite and I told him that I wanted him to know that he got me enthused about DX and I would never forget the excitement of that 5W1AD contact. He thanked me and I asked if I could have my picture taken with him. Pat was ready to snap a nice picture with his good phone caMera.

Later, I sent Don an e-mail thanking him for letting me get a picture with him. He said he appreciated my statement about his influence because he still hears some unfavorable remarks. After almost 50 years, I thought he should know his early operations had a positive influence on at least one young ham.

I was glad Pat was there to be able to meet Don also. The whole experience was a little surreal since Don was the last ham on earth I ever expected to come face to face with. One DX source described him as a "legend, hero, and scoundrel all wrapped up in one". Every time I hear about the latest DXpedition extravaganza with a half million dollar budget and 15 operators, I think about Don taking his Collins equipment out to those rocks and islands and working all by himself. However you may feel about him, he had an impact on the DX'ing world.

Articles from Our Members
Dennis Schaefer—W5RZ (continued)

73,
Dennis, W5RZ



El Salvador

AI5P—Rick Harris

The trip from Panama City to San Salvador certainly began on a high note. When I got to the airport, the check-in clerk upgraded me to Business Class on Taca Airlines. Boy, was that nice. More like First Class as there were about 16 seats or so. The two hour flight was excellent.

El Salvador (literally “the Savior”) is the smallest and most densely populated country in Central America. Its capital and largest city is San Salvador. It is the only country in Central America without a Caribbean coastline. Most of the country is on a fertile volcanic plateau. The highlands are cultivated for coffee, the coastal plain for cotton, and the lowlands for sugar. El Salvador has a long history of destructive earthquakes and volcanic activity. The latest damaging earthquake was in 2001 and the last major volcanic eruption was in 2005.

I arrived at the San Salvador airport just after dark. It is about 25 miles from downtown. The downside – no one there to meet me. Fortunately, I had the home phone number of my host Edgardo, YS1ECB, and one of the taxi “hustlers” let me use his phone. I found out he was on the way. After about 30 minutes, he arrived and I had my first meeting with a very interesting gentleman. We drove back to town in his taxi and caught up on our correspondence. Later we found out that during the drive there had been an earthquake shock but we didn’t feel it. He dropped me at my hotel which was just around the corner from his house. It was a small hotel that catered to temporary workers in the city. About \$ 25 per night, excellent room and great breakfast! A couple of days after I arrived, while watching TV in my room, I felt a sudden earthquake “jolt” – pretty common I guess around here, but a definite shock to me!

Unfortunately, Edgardo’s antenna mast

had been broken by high winds sometime earlier so I could not be QRV from his station. He made arrangements for me to meet Dr. Andres Goens, YS1AG. He is a well-known DXer in El Salvador and I had worked him several times including during my last trip to Martinique earlier this year. He’s worked them all

but North Korea. His main interest now is 6 meters where he has worked around 170 countries! He is a plastic surgeon but mostly teaches now. His house was full of old Collins equipment and various makes of military transmitters he has found over the years. All his antennas are homebrew and he has two very large towers right in the middle of the city!

Since it was the wet season, there were several days of rain and dark skies. I did manage to see a few sights. The first was the El Boqueron National Park just outside the city. This is the top of the San Salvador volcano at about 5,905 feet. The crater is 1.5 km across and 558 meters deep. Its most recent eruption was in 1917 which destroyed much of the city. It was quite a walk but worth the hike!

Another day we took a bus to Santa Ana – the second largest city in El Salvador. Near here is where Edgardo has his farm growing coffee. This was quite interesting to see. After seeing the farm, we went to the nearby town of Chalchuapa to see the Maya ruins of Tazumal. Unfortunately, by this time it was late in the day, dark clouds, and intermittent rain. The small museum displayed interesting Mayan artifacts. On the way back to San Salvador, I was freezing in the air conditioning which led to a nasty cold.

One of the most fun parts of the visit was seeing all the beautiful handicrafts. Again, like Panama, it’s easy to relate to the prices since El Salvador (since 2001) also uses U.S. currency as its money. And they love the \$ 1 coins, which we

have never taken to, and it’s quite common to give and receive \$ 1 coins. I went bargain-crazy with such beautiful handicrafts at low prices. It presented a packing problem but I was able to solve that!

Another great thing was the food. I had a variety of delicious meals including the traditional pupusa – a corn or rice flavored bread stuffed with fried beans, cheese and pork.

One of the last things I got to do was to visit the headquarters of the National Radio Society and site of the YS1YS Club Station. I managed to make a few contacts from there. On the way back to the hotel, we stopped at the beautiful Basilica de Guadalupe Church. Construction was begun in 1921 in the colonial art style. A picture taken here was used for my YS1/AI5P qsl card.

I didn’t get to operate much but I did manage 360 contacts – all on SSB. Several South American (CE, CX, LU) contacts were made on 6 meters.

From here, I flew to Managua, Nicaragua, on September 12th.

Some pictures from this trip are on the next page.

El Salvador

AI5P—Rick Harris (continued)

Coffee Bush



Club Station



YS1ECB Restorations



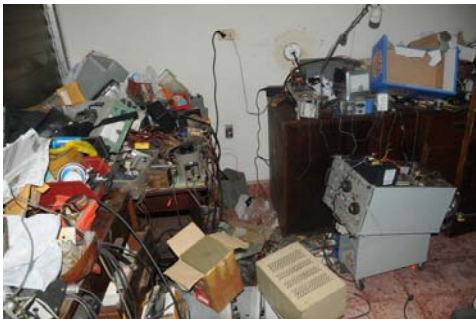
Mayan Ruins



YS1AG Antennas



YS1AG Project room

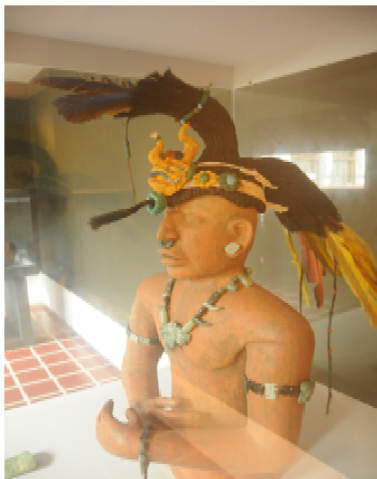


El Boqueron National Park -

Volcanic crater



Mayan Museum



Left to right - YS1ECB, AI5P, YS1AG



N5ZM are card checkers.

K5UR commented that the outgoing QSL bureau processed 1 million cards. Rick also made mention that has been some discussion about splitting Iraq into multiple countries.

New Business

With the passing of K9IW, we need a replacement on the Executive Board. By the rules, the past president is on the Executive Board. Prior to K9IW, N5ZM was President. N5ZM will be on the Executive Board.

DXPeditions

We received two letters asking for support:

FT4TA—Tromelin. After some discussion N5ZM made a motion to support the operation. W5YV seconded. The motion carried.

ZK3—Tokelau. A motion was made to support this DXpedition. It was seconded and the motion carried.

A request was made for an updated membership list. N5RN said he would create and send it out.

N7FF mentioned the idea of opening up a station during a DX contest and invite some guest to see and participate. Suggested the possibility of a Low Power/MultiSingle classification for a club prize with to those within the club.

AI5P Contest Results. N5ZM made the presentation

SSB—K5UR

CW—W5VY

Overall—N5ZM

N7FF took a picture of the winners.

N5QS shared his experience working W1AW/5. It is believed that we did over 25,000 contacts. K5UR said he had approximately 3,000 contacts with a peak rate of 300 Qs/ hour.

Closing remarks

W5VY moved to adjourn, N5QS seconded, motion passed. Meeting adjourned at 1:35 PM.

New and Noteworthy

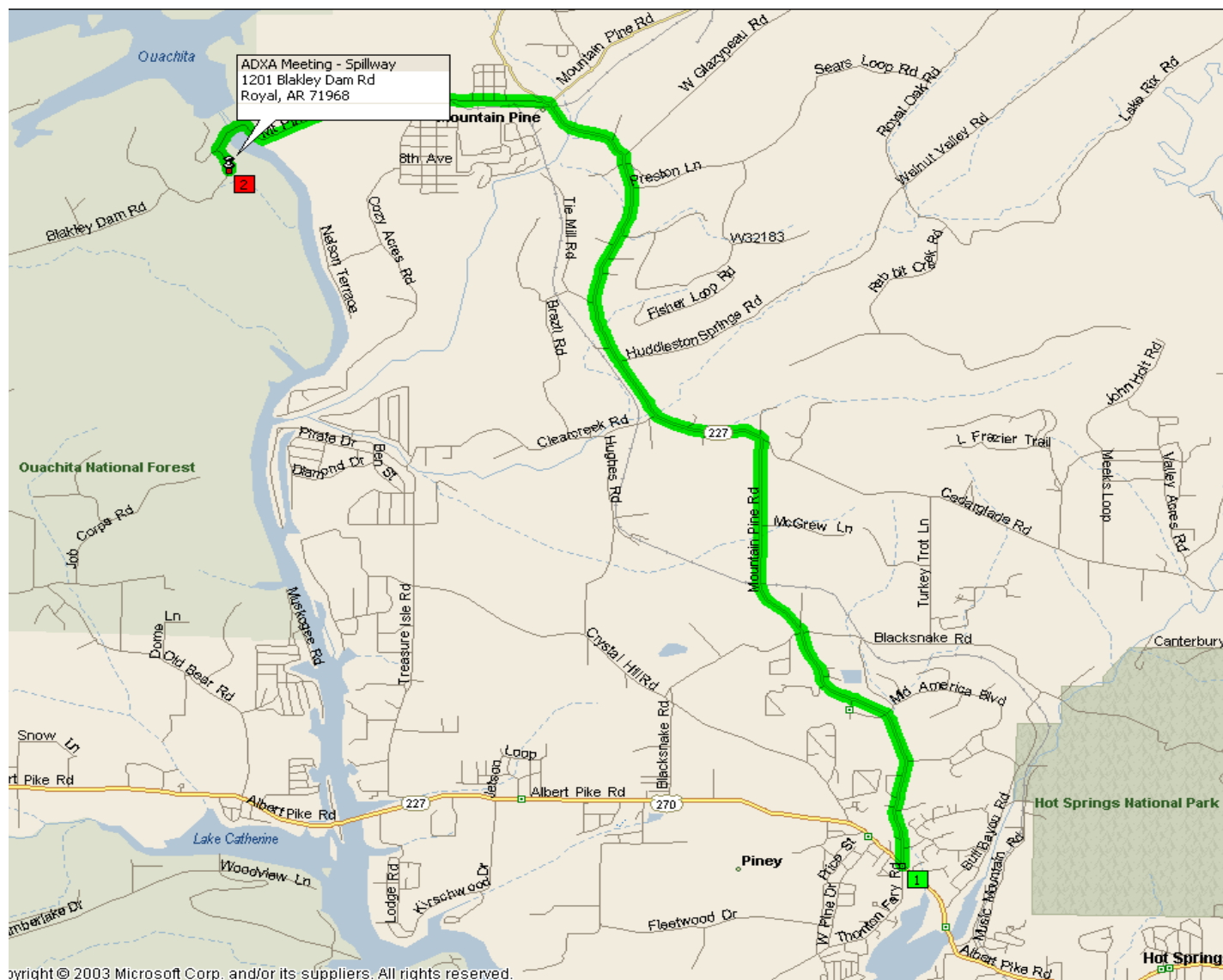
- From Roger, N5QS—
 - AF5OD Landon brought his cards to me Saturday and I sent in his DXCC application. I don't know how fast it will process but thought you would be interested.

Directions To Next ADXA Club Meeting—September 20, 2014

1201 Blakely Dam Road Royal, AR Proceed to the Spillway Pavilion (not Avery)

GPS Coordinates:

34° 34.216' N 93° 12.871' W



ARKANSAS DX ASSOCIATION

MEMBERSHIP/RENEWAL APPLICATION

BUSINESS NAME

President: Frank Fahrlander, N7FF
Vice President: Jim Barron, WB5AAA
Secretary/Treasurer: Glenn Wolf, N5RN

Club Mailing Address:
E Glenn Wolf Jr
210 S Estates Cove
White Hall, AR 71602



We're on the web
www.adxa.org

CALL: _____

LICENSE CLASS: _____

APPLICATION: ☐ NEW ☐ RENEWAL

NAME: _____

PHONE: () _____.

ADDRESS: _____

CITY: _____

STATE: _____

ZIP: _____

EMAIL: _____

DXCC MEMBER? _____

ARRL MEMBERSHIP EXPIRES: _____

SPONSOR'S CALL _____

ARRL MEMBERSHIP REQUIRED

(ADXA IS A 100% ARRL AFFILIATED CLUB)

VOTING MEMBERS MUST HOLD DXCC

VALID INTEREST IN DX REQUIRED FOR ASSOCIATE (NON-VOTING)
MEMBERSHIP

YEARLY DUES **\$25.00**, Family membership **\$35.00**

Dues can also be accepted via PayPal:

Using your PayPal account send your dues payment to
n5rn@adxa.org

Make sure you select the personal tab and identify this payment as a gift
or there will be a surcharge.

MAIL APPLICATION TO:

E Glenn Wolf, Jr., N5RN
210 S Estates CV
White Hall, AR 71602 -8216